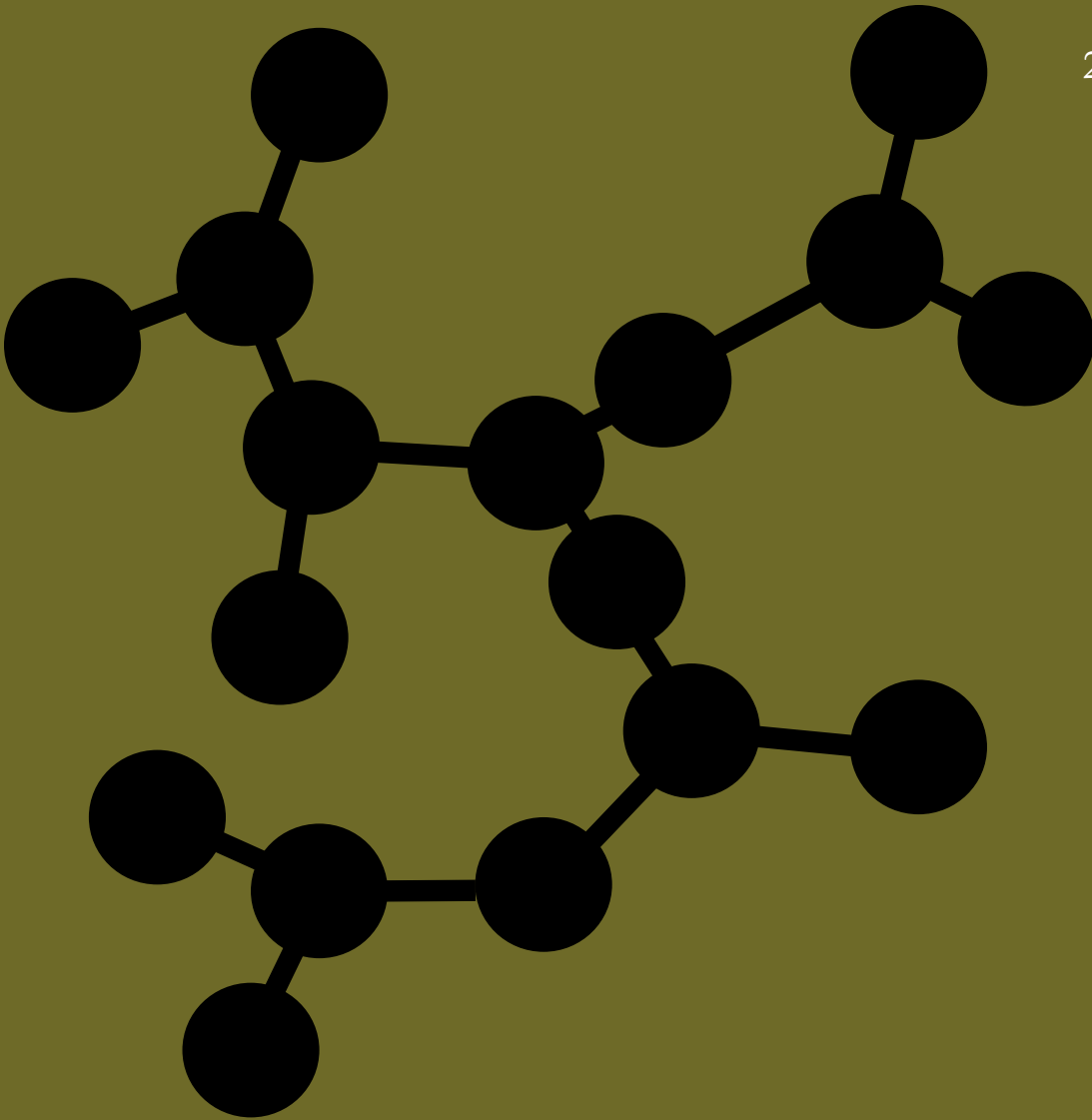


CANCER CARE PROGRAM

ANNUAL REPORT

2008



NORTHSIDE HOSPITAL



CANCER CARE PROGRAM

ANNUAL REPORT

2008



NORTHSIDE HOSPITAL

2008 CANCER CARE PROGRAM ANNUAL REPORT

Northside Hospital is a leading provider of cancer care services in the State of Georgia providing care for all types of cancer with state-of-the-art technology, excellence in clinical quality, compassionate care and support for patients and their families.

2008 has been a very productive year for the Northside Hospital Cancer Care Program. With the support and leadership of the Cancer Committee we have continued our growth and many accomplishments to improve cancer care services for our community.

Highlights:

- Opened a new Breast Care Center at Northside Hospital-Forsyth (NSH/Forsyth)
- Opened a histology lab at NSH/Forsyth
- Received state Certificate of Need (CON) approval for Radiation Oncology services at both Forsyth and Cherokee campuses
- Received state CON approval for fixed PET/CT at Atlanta campus and mobile PET/CT to support Forsyth and Cherokee campuses
- Achieved exceptional survival rates for blood and marrow transplant (BMT) patients
- Initiated Heated Intraperitoneal Chemoperfusion (HIPEC) for GYN oncology patients
- Expanded robotic surgery capability to NSH/Forsyth and NSH/Cherokee
- Began offering classes on hereditary cancer risk and genetic testing to the community
- Completed planning for a new 36-bed BMT/Leukemia Unit
- Conducted first regional Women's Oncology Symposium

Without the continued efforts and commitment of the Oncology team and the Northside Hospital Cancer Committee, these accomplishments would not have been possible. With great pleasure, we present the 2008 Cancer Care Program Annual Report for Northside Hospital.

Respectfully submitted,



Colleen Austin, M.D.
Chair, Northside Hospital Cancer Committee



Patti Owen, MN, RN
Director, Oncology

CANCER COMMITTEE MEMBERSHIP

PHYSICIAN MEMBERS – SPECIALTY

Colleen Austin, M.D., Medical Oncology
Lynn Baxter, M.D., Radiology
Benedict B. Benigno, M.D., GYN Oncology
Kristina E. Bowen, M.D., Medical Oncology
Peter d'Aubermont, M.D., MOHS Surgery
Nishan Fernando, M.D., Medical Oncology
Thomas Fitzsimmons, M.D., General Surgery
Lawrence M. Goldstone, M.D., Urology
Kent Holland, M.D., Blood and Marrow Transplant
Pradeep Jolly, M.D., Medical Oncology
J. Bancroft Lesesne, M.D., Medical Oncology
Deborah Martin, M.D., General Surgery
Tracey McElveen, M.D., Radiation Oncology
Scott Miller, M.D., Urology
Lawrence Morris, M.D., Blood and Marrow Transplant
Thomas Phillips, M.D., Radiation Oncology
Sreekanth Reddy, M.D., Medical Oncology
Craig Richman, M.D., Ear Nose Throat
Arnold Rosen, M.D., General Surgery
Elizabeth Steinhaus, M.D., Breast Surgery
Stephen Wells, M.D., Pathology

OTHER MEMBERS, SPECIALTY

E. Lisa Austin, Central Research Office
Lynne Bailey, Infusion Center
Vicki Barnett, Surgical Services
Marian Blaesser, BMT Unit
Jenny Bodycomb, Health Psychology
Stacey Brown, Blood and Marrow Transplant
Terri Brown, Pathology
Janet M. Brumfield, Radiation Oncology
& Screen Atlanta
Jacquelin Burt, Oncology Data Center
Susan Casella, Breast Health Program
Joy Chang, Acute Pain Service

Diane Clancy, Marketing and Public Relations
Margaret Currens, Oncology Support Services
Deidre Dixon, Radiology
Rev. Laura Dorsey, Pastoral Care
Sean Dresser, Medical Physics & Radiation Safety
Adriann Rodriguez Dunams, Oncology Support Services
Sharon Edwards, Northside Hospital-Forsyth
Megan Freeman, Pharmacy
Kathie Fuller, Wound and Ostomy Care
Sherri Gaeta, Nutrition Services
Aisha Ghafoor-Harris, Physical Therapy
Melissa Harris, Case Management/ Discharge Planning
Dale Israel, Community Outreach
Keisha Jennings, Inpatient Oncology
Mildred Jones, Oncology Data Center
Jane Kasow, BMT Unit
Leslie Kerns, Blood and Marrow Transplant
Shanna Y. Lee, American Cancer Society
Karen Manion, Blood and Marrow Transplant
Rachel Newby, The Wellness Community
Patti Owen, Oncology Services
Selvi Palaniappan, Hereditary Cancer Program
Angie Patterson, Network of Hope
Barbara Schipani, Blood and Marrow Transplant
Raj Singh, Radiation Oncology
Dawn Speckhart, Blood and Marrow Transplant
Dorie (Syen) Sokol, Occupational Therapy
Terri Tayco, Inpatient Oncology
Aaron Thomas, Oncology Services
Lynn Vann, Pharmacy
Renice Washington, Women's Oncology
Ora D. Williams, Quality Improvement
Gloria Wyatt, Northside Hospital-Forsyth

WOMEN'S ONCOLOGY

Northside Hospital is well recognized as the regional leader in women's services. With a focus on providing women a lifetime of care, Northside is known not only for strong obstetrical and maternity services, but also for excellence in women's cancer care. Today, Northside diagnoses and treats more cases of breast and gynecologic cancer than any other hospital in Georgia.

BREAST CARE PROGRAM

During 2007, 1,025 new breast cancer cases were diagnosed and/or treated at Northside Hospital. This volume represents a slight increase from 2006 and is the highest volume for any hospital in the state.

During 2008, growth and improvements continued in the Breast Care Program with the opening of a new Breast Center, increase in Breast MRI use, ongoing implementation of digital mammography and continued integration of services at the NSH/Cherokee campus.

- **Opening of a New Breast Care Center at NSH/Forsyth.**

Located within the beautiful new NSH/Forsyth Women's Center, the Breast Care Center provides full service breast screening and diagnostic services including: digital mammography, stereotactic breast biopsy, and breast MRI. The new facility offers state-of-the-art technology, specialized radiologists and staff, convenient appointments, easy access, plus the added benefit of being located in comfortable and warm surroundings.

- **Increased Utilization of Breast MRI.** The use of breast MRI has grown dramatically over the last two years, with a near 200% increase in procedure volumes from FY 2006 to FY 2008. Breast MRI scan is approaching 100% sensitivity in identifying invasive breast cancers. Many newly diagnosed patients are now receiving a breast MRI scan before surgery to determine the full extent of their disease, and to assist with surgical/treatment planning. In the future, this technology may prove to be the best modality for follow-up imaging after breast cancer treatment.

- **Implemented Full Field Digital Mammography Across NSH System.**

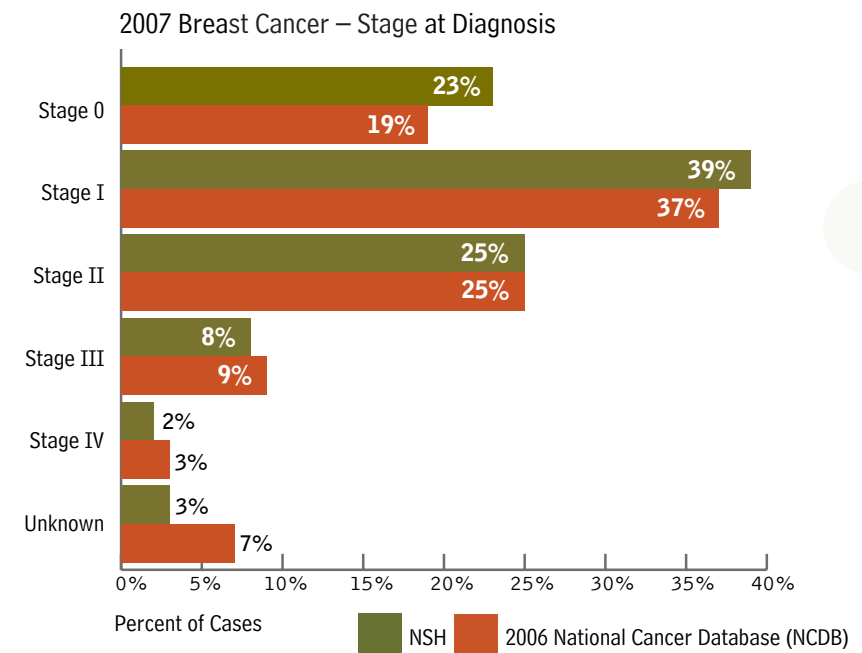
In 2008, Northside completed its commitment to install full field digital mammography in all three hospitals and all outpatient breast imaging locations. Benefits of digital mammography include improved clarity of image and increased sensitivity to abnormalities in some patient subgroups.

- **Continued Programmatic Service Improvements at NSH/Cherokee.**

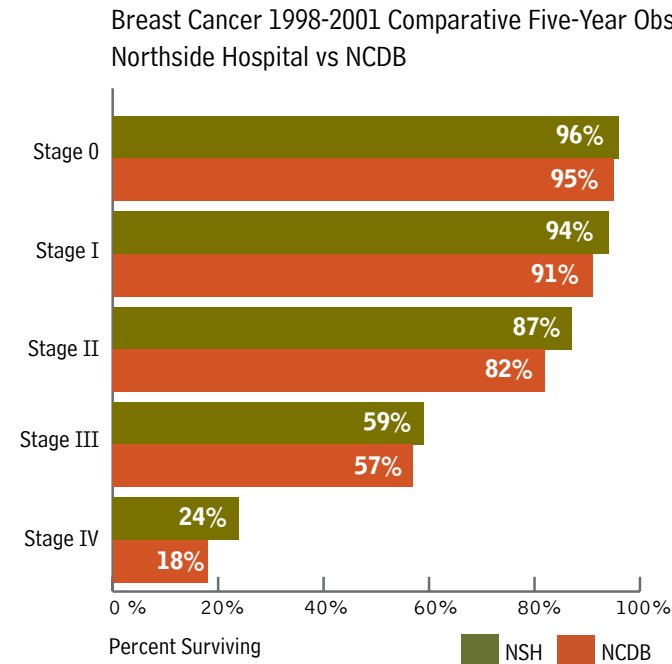
During 2008, efforts to integrate Breast Care Program services at NSH/Cherokee continued. Accomplishments included implementing breast needle localization and intra-operative breast ultrasound procedures, increasing local physician awareness of the Hereditary Cancer Program and providing Network of Hope survivor volunteer support to newly diagnosed breast cancer patients.

Stage at Diagnosis

Diagnosing breast cancer in its earliest stages ensures the best chances for successful treatment outcomes. Northside continues to exceed national averages in the proportion of breast cancer patients being diagnosed at the earliest stages of disease.



NCDB Comparative Five-Year Survival Rates. The most recent five-year survival rates for Northside Hospital breast cancer patients are based on cases diagnosed between 1998 and 2001. Survival rates were higher than national averages in all American Joint Commission on Cancer (AJCC) TNM stages of the disease.



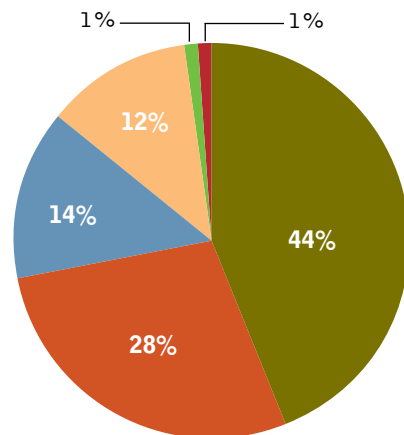
GYN ONCOLOGY

More cases of gynecologic cancer are diagnosed and treated at Northside Hospital than at any other hospital in Georgia. As a leader among providers of cancer care services in Atlanta, Northside offers ground breaking procedures for better outcomes and less invasive treatments for gynecologic cancers.

Northside Hospital provided care for 294 analytic cases of gynecologic cancer in 2007. The top three types of gynecologic cancer were endometrial (44%), ovarian (28%), and invasive cervical cases (14%).

2007 Gynecologic Cancer Cases Northside Hospital/Atlanta & Forsyth

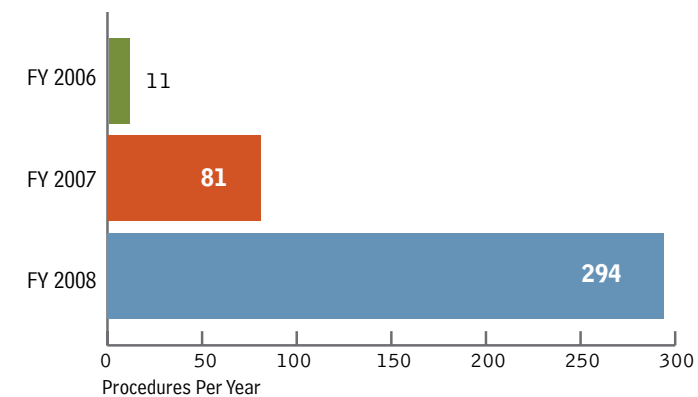
Uterus	129	44%
Ovary	81	28%
Cervix	42	14%
Vulva	34	12%
Vagina	4	1%
Other Female Organs	4	1%



Accomplishments in 2008 Included:

- Implemented Heated Intraperitoneal Chemoperfusion (HIPEC).** This new procedure treats patients with ovarian cancer. Performed immediately after surgery in the operating room, HIPEC delivers heated chemotherapy directly into the abdominal cavity where it can penetrate diseased tissue directly.
- Increased Use of Robotic Surgery for Gynecologic Oncology Patients.** Northside ranks in the top 5% for volume in the United States in use of robotic technology in gynecologic surgery. The volume of robotic cases has more than tripled over the past year, from 81 cases in FY 2007, to 294 cases in FY 2008. Standardized physician orders for robotic surgery patients were implemented and educational sessions on robotic surgical patient care were provided to the inpatient oncology nursing staff.

GYN Oncology Robotic Surgery Procedures FY 2006 - 2008



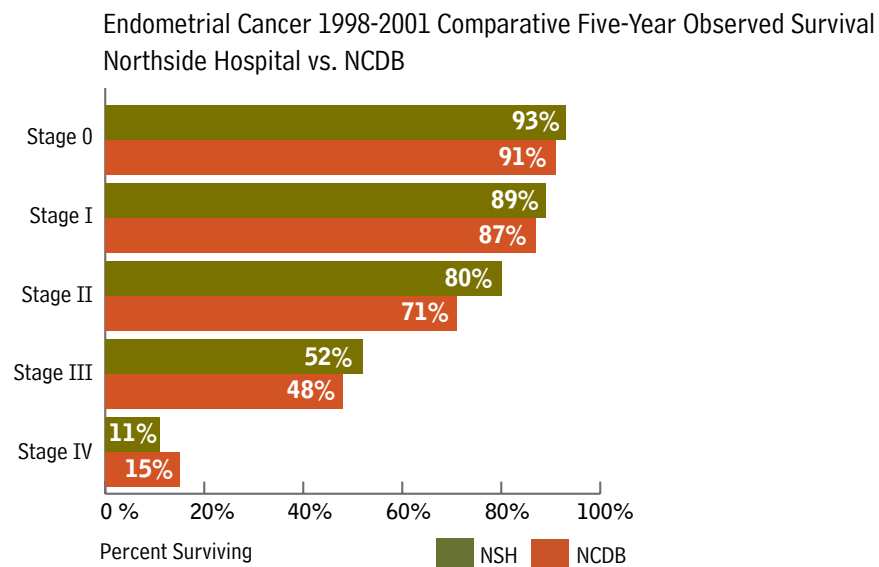
- Attained High Patient Satisfaction Levels on GYN Oncology Specialty Unit.** Northside Hospital has an inpatient unit dedicated specifically to the care of gynecologic oncology patients. This specialty trained staff achieved very high levels of patient satisfaction this past year. Several measures of satisfaction surpassed the 90th percentile rankings in a survey by Press-Ganey, including communication with nurses, responsiveness of staff, pain management and unit environment.

- **Conducted Regional Oncology Nursing Symposium on Women’s Cancer.**

The symposium, “Emerging Trends and Technologies” provided excellent presentations by several Northside physicians and staff. The event was very successful with attendees coming from 15 Georgia counties and four states. Topics included oncotyping and breast cancer, robotic surgery, the HPV vaccine and new developments in research.

- **Began Monthly Classes on Hereditary Cancer Risk.** To increase the understanding of the risks of hereditary cancer, Northside began offering free monthly educational seminars conducted by a certified genetic counselor at The Wellness Community - Atlanta Northside.

NCDB Comparative Five-Year Survival Rates. A review of five-year survival rates for Northside Hospital’s endometrial cancer patients demonstrated favorable comparisons to national averages. Based on cases diagnosed between 1998 and 2001, survival rates were higher than averages from the National Cancer Database in AJCC TNM Stages 0 through III. Only 19 cases were treated in Stage IV, which is too small a sample to be statistically significant.

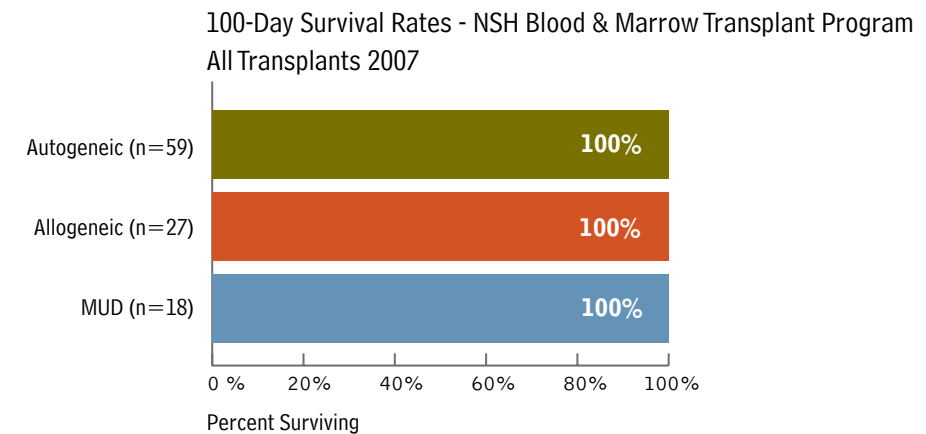


BLOOD AND MARROW TRANSPLANT PROGRAM

The Blood and Marrow Transplant Program at Northside Hospital continues to thrive as one of the largest clinical transplant programs in the United States, serving patients undergoing bone marrow/stem cell transplant therapy. With 133 transplants completed in FY 2008, the BMT Program remains among the top 14% of transplant programs in the country by volume.

Superior Survival Rates

During 2007, Northside’s BMT Program attained exceptional 100-day survival rates of 100% for all transplants performed, including high-risk and matched unrelated donors (MUD).



Accomplishments in 2008:

- Completed expansion plans for the new BMT unit, which will increase patient beds from 17 to 36 and will include state-of-the-art HEPA-air filtrated rooms in an updated and warm environment.
- Implemented new requirements for data reporting set by the Center for International Blood and Marrow Transplant Research (CIBMTR)/Health Resources and Services

Outstanding Study Results

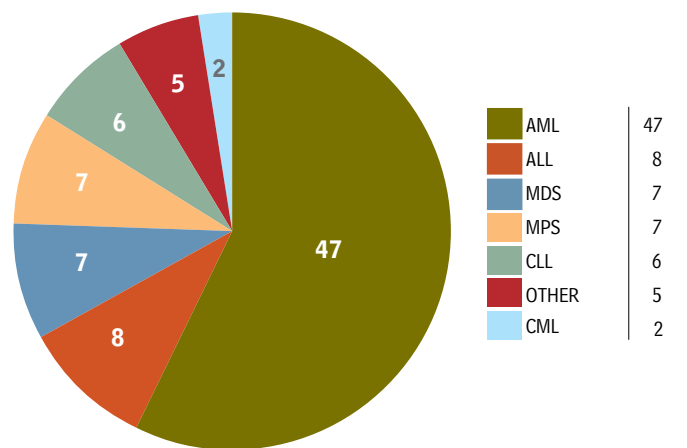
Northside Hospital’s Blood and Marrow Transplant Program in collaboration with the Sidney Kimmel Cancer Center at Johns Hopkins, conducted a new trial entitled *A Phase II Trial of Non-Myeloablative Conditioning and Transplantation of Partially HLA-mismatched Bone Marrow*. Historically, the use of partially HLA-mismatched donors resulted in poor outcomes. To date, the BMT Program at Northside has realized patient outcomes in this trial comparable to patients who have undergone *matched related donor transplants*. Through outstanding outcomes, this clinical trial has gained national recognition and is now available through the national BMT Clinical Trials Network as part of a multi-center Phase II study.

LEUKEMIA PROGRAM

The Leukemia Program at Northside Hospital is part of one of the largest clinical transplant programs in the Southeastern United States. Our multidisciplinary team consists of highly skilled practitioners, dedicated nursing staff, leukemia coordinators and a health psychologist.

In 2007, Northside Hospital's comprehensive Leukemia Program provided care for 82 analytic cases. Types of disease treated included acute and chronic lymphocytic leukemias (ALL, CLL), acute myelocytic leukemia (AML), chronic myelogenous leukemia (CML) as well as myeloproliferative and myelodysplastic syndromes.

Analytic Leukemia Cases – 2007



Clinical Research

Clinical research is an integral part of the BMT and Leukemia Programs at Northside Hospital. During the past year, an initiative was undertaken to increase the number of patients enrolled into leukemia clinical trials. Action steps to facilitate patient enrollment included:

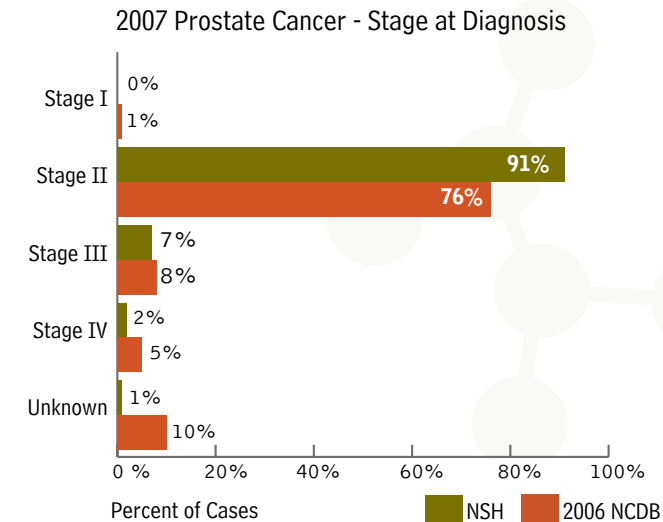
- Initiated process for all leukemia patients to be screened for initial enrollment on leukemia studies
- Increased communication to research staff for all new leukemia patients admitted
- Modified process for initial bone marrow biopsy on new leukemia patients to allow for screening and sample requirements for entry into clinical trials
- Identified "nurse liaison" on inpatient unit to act as resource for clinical research patients

PROSTATE CANCER CARE

More cases of prostate cancer have been initially diagnosed or treated at Northside than at any other hospital in Atlanta. During 2007, care was provided for 626 new patients. The hospital offers a wide range of treatments – from the minimally invasive to the latest advances in surgery, including hormone therapy; radiation therapy; prostate seed implantation; and traditional laparoscopic and robotic surgery. Northside has gained national recognition for its robotic prostatectomy program ranking in the top 10th percentile.

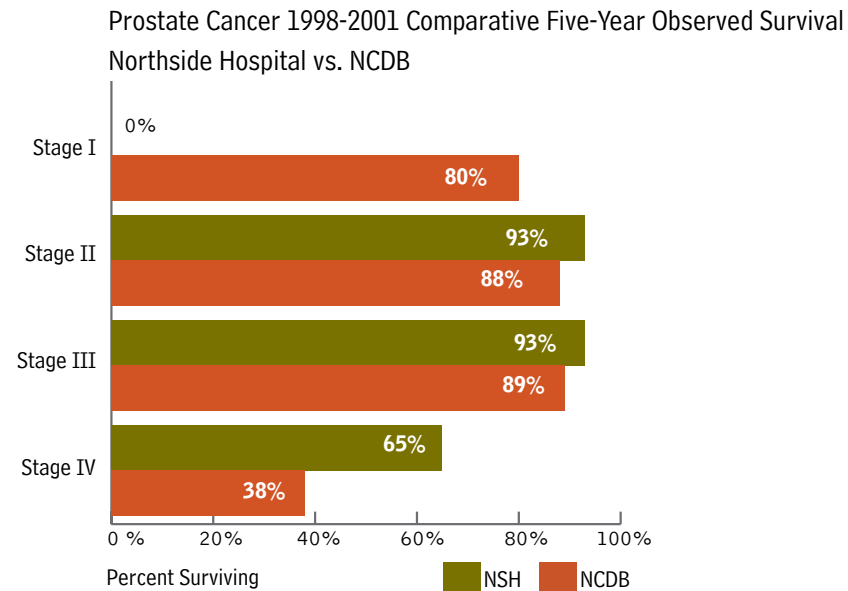
Stage at Diagnosis

Diagnosis of prostate cancer in its earliest stages provides for the best treatment outcomes and the highest chances for long term survival. During 2007, Northside again surpassed national averages in the early diagnosis of prostate cancer, with 91% of cases being diagnosed in AJCC Stage II, compared to a national average of 76%.



Survival Rates

High rates of early diagnosis, combined with the most advanced prostate cancer treatment available, result in improved patient survival rates. Current five-year observed survival rates for Northside's prostate cancer patients surpassed national averages in AJCC TNM Stages II through IV. (The number of Stage I cases from Northside was too small for comparison.)



Community Outreach

To promote the importance of early detection, Northside conducted free prostate cancer screening events at the Atlanta, Forsyth and Cherokee campuses during September of 2008. Of the 172 men screened, nine abnormalities were identified and two new prostate cancers were diagnosed.

In addition, during 2008, classes on the latest in prostate cancer treatment were provided at The Wellness Community - Atlanta Northside and a monthly support group for prostate cancer patients was implemented.

CONTINUUM OF CARE

Northside Hospital currently holds Accreditation with Commendation from the American College of Surgeons' Commission on Cancer as a Community Hospital Comprehensive Cancer Program. Northside's Cancer Care Program addresses cancer patient needs throughout the entire continuum of care, from prevention and education through diagnosis, treatment, and beyond.

2008 Continuum of Care Highlights:

Education & Prevention

- Conducted 74 cancer awareness and prevention classes and events throughout the year, reaching more than 7,200 participants
- Provided breast health education to 90 organizations, reaching more than 5,800 women, men and high school girls
- Began offering free monthly classes to the community on hereditary cancer risk
- Increased hereditary cancer referrals by 28% to reach 402 for the year and provided genetic testing for 245 patients

Screening

- Hosted free skin cancer screenings at all three campuses with 244 participants, resulting in 71 referrals for biopsy
- Provided free prostate screenings at all three NSH campuses with 172 participants, resulting in nine follow-up recommendations and two confirmed cancer detections.
- Provided 44 free screening mammograms and 40 diagnostic breast procedures through a grant from Susan G. Komen for the Cure

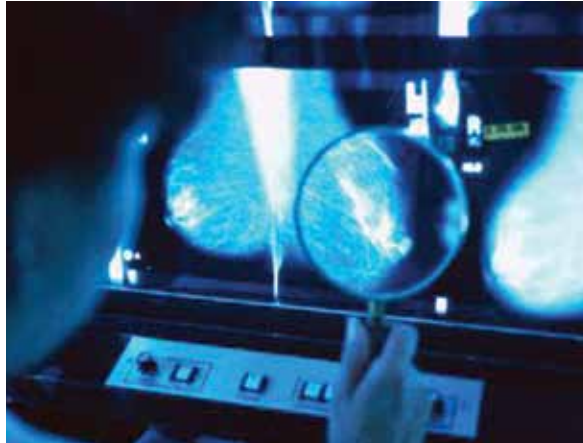
Diagnosis

Imaging

- Opened Breast Care Center at NSH/Forsyth, including addition of stereotactic biopsy and breast MRI
- Obtained CONs for fixed PET/CT at Atlanta campus and mobile PET/CT services to support Forsyth and Cherokee campuses
- Implemented digital mammography at all NSH breast imaging locations

Pathology

- Opened Histology Lab at NSH/Forsyth to allow for on-site tissue specimen processing and interpretation
- Completed CAP proficiency testing for Her-2/Neu analysis in breast cancer
- Expanded use of chemo-sensitivity testing in GYN oncology cases



Treatment

Prospective Conferences

- Initiated monthly multidisciplinary lung cancer conferences

Inpatient Oncology

- Implemented hourly patient rounds on oncology inpatient units
- Completed planning for expansion of BMT Unit

Infusion Services

- Increased annual infusion procedure volumes at NSH/Atlanta by 62%
- Provided chemotherapy certification courses for RNs at NSH/Cherokee

Radiation Oncology

- Obtained CON for radiation oncology facilities at NSH/Forsyth and NSH/Cherokee
- Installed new 16-slice CT scanner at NSH/Atlanta Cancer Center

Surgery

- Expanded robotic surgery technology to NSH/Forsyth and NSH/Cherokee
- Increased use of robotic surgery in GYN oncology cases
- Implemented Heated Intraperitoneal Chemoperfusion (HIPEC)

Research

- Reorganized services to create new Central Research Office
- Improved procedures for review and approval of new studies
- Opened new CCOP trials and new BMT/Leukemia trials

Support & Survivorship

American Cancer Society

- Implemented Patient Navigator Program in partnership with American Cancer Society to provide education and support to patients in the NSH/Atlanta Cancer Center

The Wellness Community - Atlanta Northside

- Initiated monthly support groups for lung, prostate, and colorectal cancer patients
- Provided new cancer patient support classes at NSH/Cherokee
- Implemented new support group for men acting as caregivers to women with cancer

Network of Hope

- Survivor volunteers provided over 1,600 hours of service, making hundreds of bedside visits and phone calls to support newly diagnosed patients.

Camp Hope

- Sponsored by the Northside Hospital-Atlanta Auxiliary, this free annual weekend retreat provided much needed fun, relaxation and renewal for 26 cancer patients.

Bone Marrow Transplant Survivors Reunion

- Northside Hospital's Blood and Marrow Transplant Program hosted its first survivors reunion. The luncheon event attended by patients, family members and staff was at the Georgia Aquarium.



QUALITY

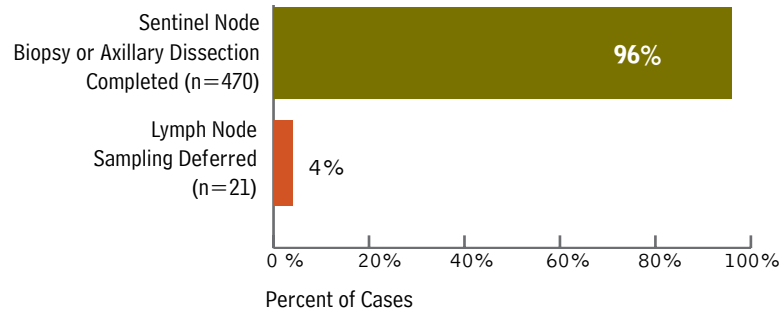
During 2008, the Cancer Care Program continued a strong focus on clinical quality with the completion of three studies to examine Northside's compliance with national cancer care guidelines. In addition to favorable study results, several quality improvements were accomplished during the year.

2008 QUALITY STUDIES

Lymph Node Evaluation in Breast Cancer

According to National Comprehensive Cancer Network (NCCN) guidelines, patients diagnosed with AJCC Stage I-IIb breast cancer should have axillary lymph node sampling performed at surgery. A review of 491 eligible cases from 2007 determined that 96% of patients had lymph node evaluation completed. In the remaining 4% of cases (n=21), lymph node sampling was deferred. Reasons for deferral were reviewed in detail and determined to be appropriate. The results of this study represent strong compliance with national guidelines.

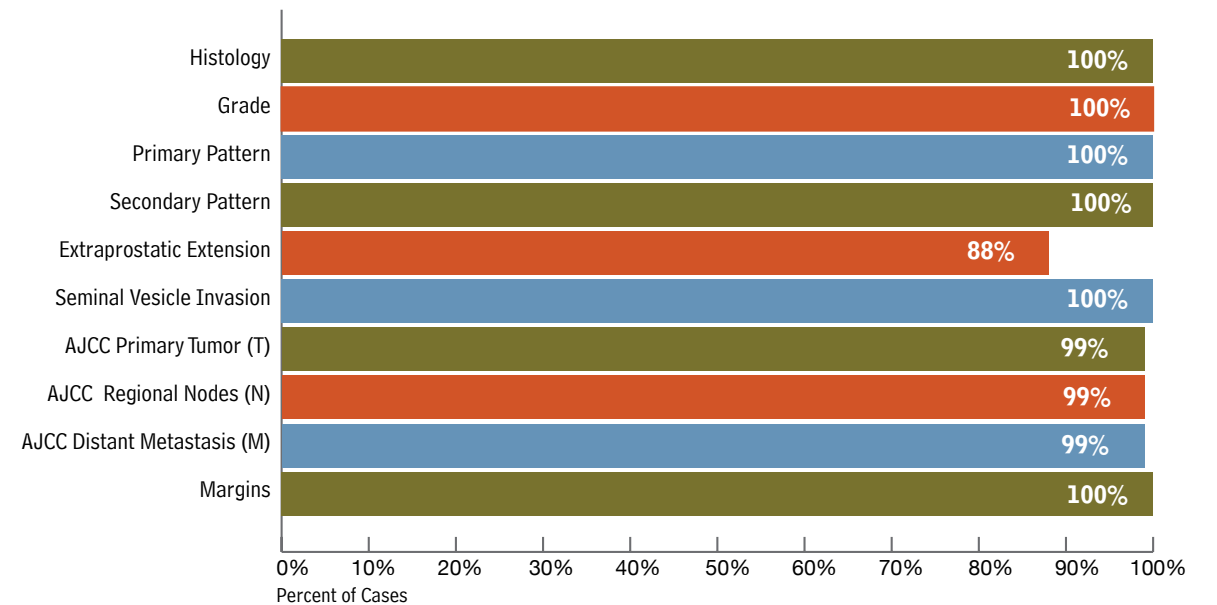
Lymph Node Evaluation in Breast Cancer
AJCC Stage I-IIb Cases – 2007



CAP Protocol Compliance in Prostate Cancer

A review of prostate cancer pathology reports from 2008 was conducted to determine rates of pathologist completion of the elements required by the College of American Pathology (CAP). Nine out of the ten required CAP elements were completed 99%-100% of the time. One element, extraprostatic extension was complete in 88% of cases. The cause for the lower rate on this element was identified and physicians were educated to improve reporting in the future.

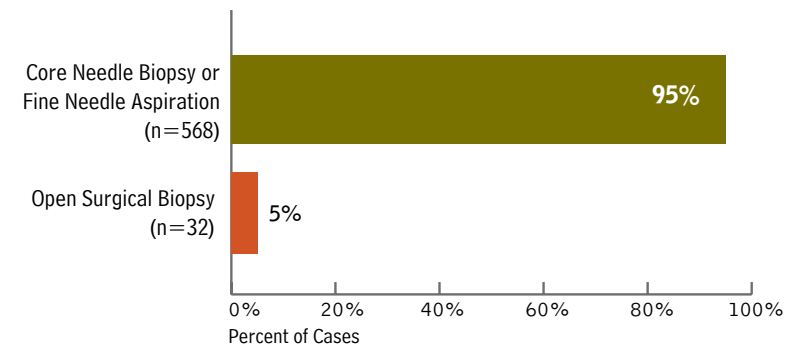
CAP Protocol Compliance in Prostate Cancer Cases – 2008



Method of Initial Breast Biopsy

According to guidelines, biopsy of the breast to determine if cancer is present should first be attempted using minimally invasive methods such as core needle biopsy or fine needle aspiration. A review of 600 breast biopsy cases from 2008 revealed a high rate of compliance – 95% of patients initially received a core needle breast biopsy or fine needle aspiration to determine their diagnosis.

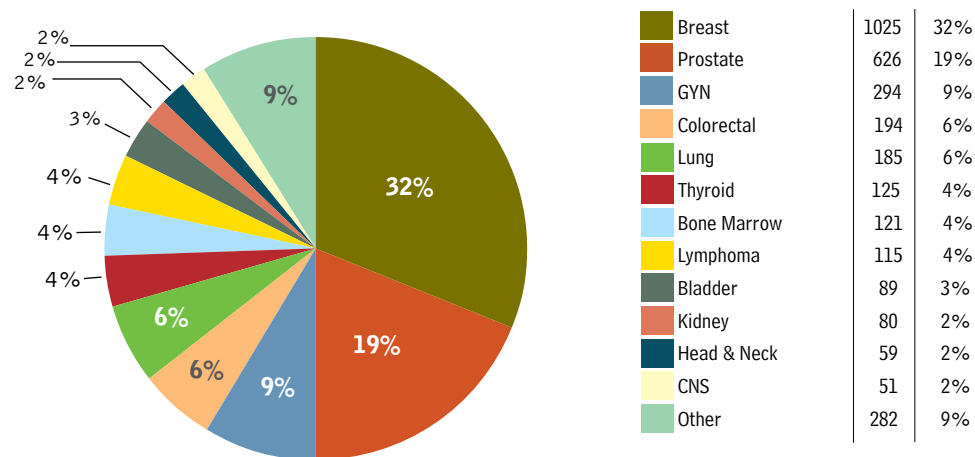
Method Used for Initial Breast Biopsy
Jan - Mar 2008



CANCER OCCURRENCE

Northside Hospital provides access to an extensive network of state-of-the-art cancer care. In 2007, NSH/Atlanta and NSH/Forsyth diagnosed or treated 3,246 analytic cancer cases – more cases than any other community hospital in Georgia. The distribution of analytic cases by tumor site is shown below.

2007 Analytic Cancer Cases
NSH-Atlanta & NSH-Forsyth



Top Cancer Sites

Breast cancer continues to be the most frequent type of cancer diagnosed and treated at Northside Hospital. During 2007, breast cancer comprised 32% of all analytic cases. Completing the top five sites were prostate (19%), gynecologic (9%), colorectal (6%), and lung (6%).

Oncology Data Center Report

In 2008, Northside's Oncology Data Center received the Blue Ribbon Award from the Georgia Comprehensive Cancer Registry. This award is given each year to hospitals that demonstrate excellence in cancer case reporting.

Accomplishments in 2008

- Abstracted nearly 4,100 total cancer cases
- Achieved a greater than 90% follow-up rate with more than 34,000 patients.
- Coordinated over 100 multidisciplinary case presentation conferences and ten physician education conferences
- Initiated monthly lung cancer conferences
- Increased registry automation and data customization through software change
- Implemented abstracting quality assessment review sessions

PATIENT ORIGIN

As a recognized leader in the Southeast for the diagnosis and treatment of all cancers, Northside continues to enhance its Cancer Care Program to provide expertise and compassionate care to patients on a regional and national level. In addition, Northside Hospital is the recipient of the National Research Corporation's prestigious Consumer Choice Award and for the twelfth consecutive year, was voted by Atlanta consumers as the "Most Preferred Hospital for Overall Healthcare Services."

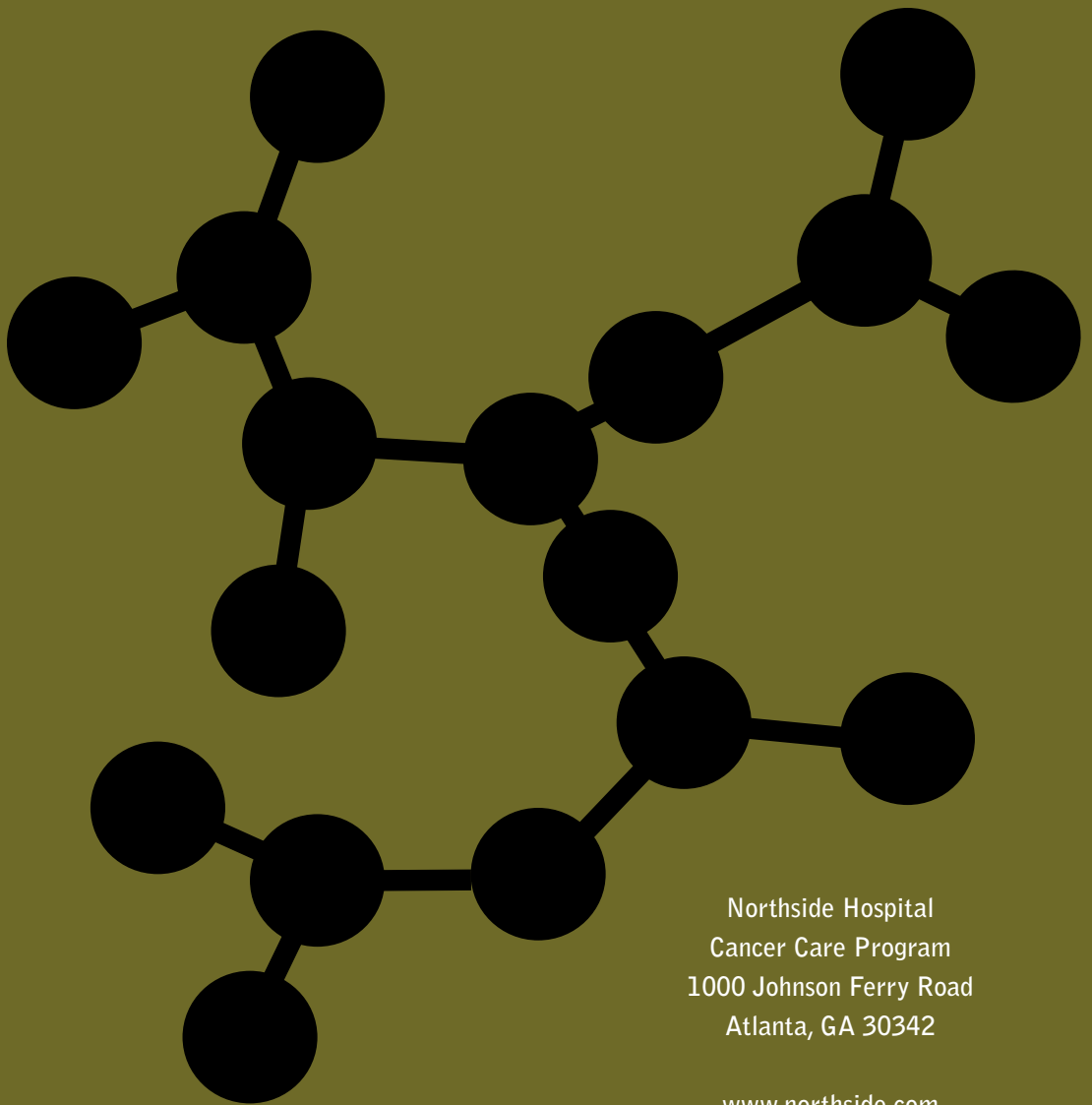
2007 Patient Origin Included:

- 3,112 patients from 87 counties in Georgia
- 131 patients from 27 other states and territories across the U.S.
- Three international patients

Northside's regional reputation as a leader in cancer care continues. Patients travel from all areas of Georgia and from many other states in the country to receive cancer care at Northside.







Northside Hospital
Cancer Care Program
1000 Johnson Ferry Road
Atlanta, GA 30342

www.northside.com